

FIRST DETECTOR NETWORK NEWS



NPDN
National Plant Diagnostic Network



October 2013
Volume 8,
Issue 4

USDA APHIS Taxonomic Training Workshop Held in Grenada

Stephanie D. Stocks, Department of Entomology and Nematology, University of Florida

A USDA APHIS taxonomic training workshop on whiteflies, scales, and mealybugs was held recently in St. George's, Grenada during the week of September 30.

The workshop was organized by Wayne de Chi and Renita Sewsaran (USDA APHIS) and led by Dr. Ian Stocks from the Florida Department of Agriculture and Consumer Services, Division of Plant Industry. Dr. Stocks is a taxonomic entomologist and curator of the groups Coccoidea and Aleyrodidae.

The workshop was held at the **Windward Islands Research and Education Foundation (WINDREF)** at **St. George's University**.

Participants from twelve Caribbean nations attended the conference. The week long workshop covered: field identification and specimen collecting, slide mounting techniques, use of the various dichotomous keys needed to identify specimens to species, and new invasive species of concern to the Caribbean.

Also discussed at the workshop were new online educational topics produced by the National Plant Diagnostic Network and its partner program Protect U.S. that participants might be interested in utilizing in their home countries.

In addition, an announcement of new

upcoming taxonomic training materials that will be available by the first of the year was discussed (see the next newsletter for the official article!).

The Caribbean has often been a pathway into the United States for pest species that originate in Central or South America, and Asia. For example, Pink Hibiscus Mealybug, which is native to Asia, came to Florida

continued on next page



Image courtesy of Joshua Yetman of St. George's University.

In This Edition:

- USDA APHIS Taxonomic Training Workshop Held in Grenada
- Southern Plant Diagnostic Regional Meeting Held in October
- Additional Detections of Emerald Ash Borer
- New Regulated Areas Established in California for Oriental Fruit Fly
- Update on Asian Citrus Psyllid and Citrus Greening
- Good News in the Eradication Effort for PPV

through the Caribbean. Conversely, pest species in U.S. states such as Florida can find their way into the Caribbean through the commercial horticultural trade.

Many Caribbean countries are small and unable to cultivate all the plant products required by their economy. Thus, Caribbean nations engage in extensive trade of plant products both within the Caribbean itself

and in neighboring states and counties in the America's. Much of this trade is regulated to ensure that plant products are pest-free, but pests still occasionally come through, and some pests are probably moved inadvertently as private and recreation boaters move plant products, especially fruits and decorative plants and plant products, within the Caribbean.



Images of scouting (top row), slide mounting and identification (middle row), and lectures on the insect groups (bottom row). Images courtesy of S. Stocks, Department of Entomology and Nematology, University of Florida.

Southern Plant Diagnostic Regional Meeting Held in October

Carrie Harmon, Plant Pathology Department, University of Florida

Diagnosticians and related regional personnel gathered October 22-24 at the SPDN hub lab for a regional meeting.

Two special sessions during the three-day meeting covered molecular diagnostics and setting diagnostic and funding priorities for the region.

Additionally, Stephanie Stocks presented new NPDN First Detector training material, including a revision of the Crop Biosecurity Course, which has been renamed the First Detector Training Course.

Each state and territory in the SPDN was represented (the USVI tuned in via Skype)

and delivered a short report on new detections, new methods, and diagnostic topics for discussion. Joe LaForest represented the Southern Region IPM Center and IPMimages/Bugwood.

A region-wide survey was completed by attendees on the final day, and all SPDN members were asked to give their input over the following week. The survey focused on setting priorities for new techniques, molecular test controls, and funding-related topics. On-site participants toured the new Plant Diagnostic Center, and explored nearby Ficke Gardens and Lake Alice and met UF's resident alligators.



Image courtesy of Phil Harmon, Plant Pathology Department, University of Florida.

NAPPO Phytosanitary Alert System

The [North American Plant Protection Organization's \(NAPPO\) Phytosanitary Alert System](#) is featured in this newsletter every month. Remember that this a great resource to keep up to date on the latest pest detections and quarantine information. The website features both official reports and

unofficial alerts of pests for Canada, Mexico, and the United States.

They also have free subscriptions that are available for periodic email notifications of new postings on their website. Be sure to check it out regularly!

Additional Detections of Emerald Ash Borer

Stephanie D. Stocks, Department of Entomology and Nematology, University of Florida

Emerald ash borer (*Agrilus planipennis*) is continuing to spread.

Recently, Kentucky has added Whitley County to their list of 28 other counties that have detected EAB.

Kansas added Johnson County for a total of two counties in that state (Wyandotte is the other county).

Missouri has added Bollinger and Pulaski Counties for a total of 9 counties in that state while Tennessee added Hamilton County to their list for a total of 21 counties there.

North Carolina also detected EAB in Granville, Person, and Vance Counties in early summer 2013 bringing the number of states that have EAB detections so far to 23.

The movement of firewood and other EAB host wood products is a key pathway for this pest to spread. USDA APHIS as well as state and local agencies are asking First Detectors to be aware of this pest and to report any suspect sightings of it.

For more information on its distribution and identification, [click here](#).

New Regulated Areas Established in California for Oriental Fruit Fly

Stephanie D. Stocks, Department of Entomology and Nematology, University of Florida

The Anaheim area of Orange County and the Cerritos-Artesia area of Los Angeles County in California are under regulation after the detection of oriental fruit fly (OFF) larvae on July 31 as well as subsequent other OFF detections.

So far, 9 larvae and 92 adults have been found in parts of Orange County while 19 adults have been found in parts of Los Angeles County.

The last eradication effort for this pest

ended in July 2012. As this pest seems to be reintroduced fairly frequently, First Detectors are asked to be always be vigilant.

While monitoring for this pest goes on year round by cooperating agencies, having additional eyes in the field is key for early detection and quick eradication.

For more information on the identification and hosts of this pest and the last eradication effort, [click here](#).

About NPDN:

The NPDN is a network of state and federal officials, land grant universities, and First Detectors whose mission is to detect, diagnose, and disseminate information regarding high consequence plant disease or pests. The NPDN was established in 2002 in response to a need for greater agricultural security.

Over the years, the NPDN has grown into an internationally respected consortium of plant diagnostic laboratories.

The five regions that make up the **NPDN** are the: **NEPDN**, **SPDN**, **NCPDN**, **GPDN**, and **WPDN**.

Please feel free to browse the links to the various regions to get a better idea of what is going on in your part of the country.



Update on Asian Citrus Psyllid and Citrus Greening

Stephanie D. Stocks, Department of Entomology and Nematology, University of Florida

USDA APHIS has recently added parts of Tulare County to its list of other California counties that are quarantined for Asian citrus psyllid. Tulare County now joins Imperial, Los Angeles, Orange, Riverside, San Bernardino, San Diego, Ventura, and Santa Barbara Counties in the quarantine for this vector of citrus greening.

In addition, the entire state of Alabama, Florida, Georgia, Louisiana, Hawaii (all islands), Mississippi, and Texas are under quarantine for this pest as well as parts of South Carolina (Beaufort, Charleston, and Colleton Counties) and Arizona (Mohave, La Paz, and Yuma Counties).

So far, areas in California that are quarantined for citrus greening include Los Angeles and Orange counties in the Hacienda Heights area while the entirety of Florida and Georgia remain in quarantine for this disease. Parts of Louisiana (Orleans and Washington Parishes), South Carolina (Beaufort and Charleston Counties) and

Texas (parts of Hidalgo County) are also under quarantine.

Citrus greening was detected in Florida in 2005 and has since spread throughout the state. This disease was also detected in Louisiana in 2008, South Carolina and Georgia in 2009, and Texas and California in 2012.

The key to slowing the spread of this disease is for First Detectors to be aware of the symptoms and to report any suspect cases to their local and state agencies.

In addition, frequent scouting of citrus plants in areas where Asian citrus psyllids are not known to occur will also help slow the progression of this disease. In these areas, it is also important to report any suspect psyllids to your local or state agencies.

For educational videos on citrus greening symptoms and scouting for its vector, please see the [Protect U.S. YouTube channel](#).

Good News in the Eradication Effort for PPV

Stephanie D. Stocks, Department of Entomology and Nematology, University of Florida

After three years of negative survey results in Orleans and Wayne Counties in New York, these counties have been removed from the PPV regulated area. While federal interstate restrictions are no longer in effect, certain New York State regulations will remain in place for these counties, however.

Plum pox virus was detected in New York in 2006 in both these counties as well as Niagara County. Federal, state, local, and tribal officials as well as industry partners have worked together to survey for and eradicate this devastating disease of stone fruits.

As no chemical control is available for treatment of this virus, eradication efforts have focused on the removal of diseased plants and other hosts within a 50 meter radius of a positive detection.

With continued monitoring and vigilance, perhaps Niagara County can be removed

as well as there have been no positive detections since 2012.

First Detectors in these areas are asked to report any suspect cases of PPV to their state or local agency. Please [click here](#) for more information on symptoms and contacts.

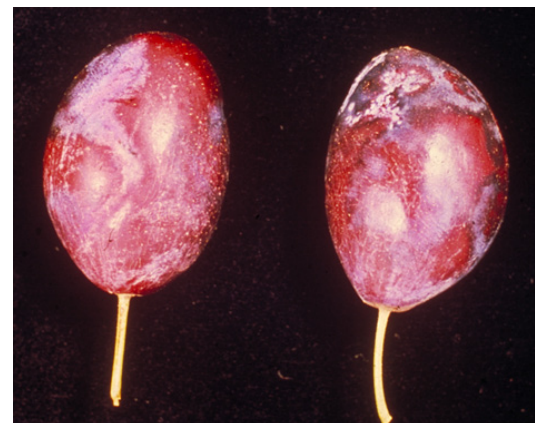


Image courtesy of Biologische Bundesanstalt für Land- und Forstwirtschaft Archive, Bugwood.org , #0454066

Upcoming Meetings:

- If you would like your meeting listed in the newsletter, let us know.

First Detector Training Opportunities:

- November 9, 2013 -Bloedel Reserve First Detector Training will be held in Bainbridge Island, WA - click [here](#) for more information.
- January 14, 2014 - Illinois First Detector Workshop will be held in Peoria, IL - click [here](#) for more information.
- January 16, 2014 - Illinois First Detector Workshop will be held in Collinsville, IL - click [here](#) for more information.
- February 12, 2014 - Illinois First-Detector Tree-Pest Training Program will be held in Springfield, IL - click [here](#) for more information.
- February 20, 2014 - Illinois First Detector Workshop will be held in Murphysboro, IL - click [here](#) for more information.
- February 26, 2014 - Illinois First-Detector Tree-Pest Training Program will be held in Quad Cities, IL - click [here](#) for more information.
- February 27, 2014 - Illinois First Detector Workshop will be held in Rockford, IL - click [here](#) for more information.
- March 7, 2014 - Illinois First-Detector Tree-Pest Training Program will be held in Mt. Vernon, IL - click [here](#) for more information.
- March 12, 2014 - Illinois First Detector Workshop will be held in Decatur, IL - click [here](#) for more information.
- March 14, 2014 - Illinois First-Detector Tree-Pest Training Program will be held in Collinsville, IL - click [here](#) for more information.
- March 21, 2014 - Illinois First-Detector Tree-Pest Training Program will be held in Champaign, IL - click [here](#) for more information.
- March 27, 2014 - Illinois First Detector Workshop will be held in Joliet, IL - click [here](#) for more information.
- If you are hosting a First Detector Training Session, please post these on the NPDN First Detector Training website so that they can be listed here.

Employment Opportunities:

- Please click [here](#) for more information.

Do you tweet?

- Click [here](#) for updates.

The NPDN First Detector Newsletter is published by the Southern Plant Diagnostic Network (SPDN) © University of Florida. All rights reserved.

Editors: Carrie L. Harmon and Stephanie D. Stocks.

To submit news items in future editions of the newsletter, contact: clharmon@ufl.edu or sstocks@ufl.edu.

You can include a short descriptive paragraph, links, and related images or documents – don't forget to include author and image credits though.



SPDN