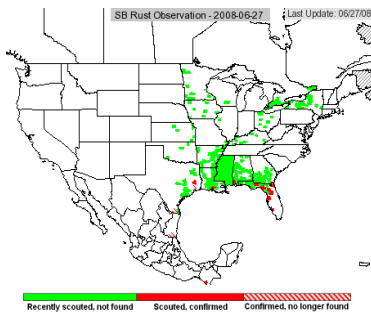


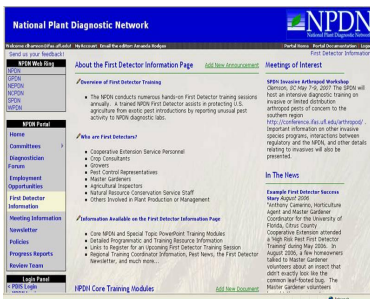
First Detector Network News

The newsletter for the NPDN First
Detector Community

June 2008



ipmPipe, www.sbrusa.net



The First Detector Information
Page at <http://www.npdn.org>

Contact us:

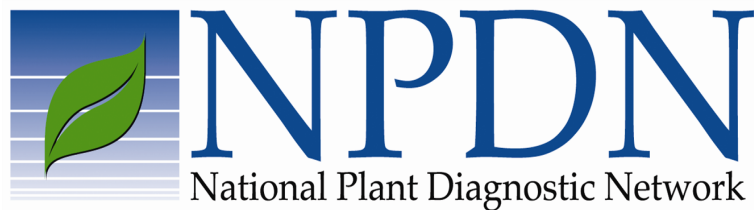
Phone :

(352)-392-3631

ext 254

Fax:

(352) 392-6532



Volume 5, Number 6

From the NAPPO Phytosanitary Alert System (www.pestalert.org) and UF/IFAS Pest Alert:

- Oriental fruit flies found in Orlando, Florida , Read more [here](#) .
- LDAF Press Release: USDA test confirms citrus greening in Louisiana - Read more [here](#) .
- New silverleaf whitefly (*biotype Q*) has growers concerned 06/13/2008. Read more [here](#) .
- Detection of Asian citrus psyllid , *Diaphornia citri* Kuwayama , in Louisiana - 06/09/2008. Read more [here](#) .
- New bacterium detected in commercial greenhouses of tomato and pepper in New Zealand - 06/09/2008. Read more [here](#) .
- Climbing Fern *Lygodium microphyllum* prohibited entry into the United States , 06/06/2008. Read more [here](#) .
- Eradication of *Plum Pox Virus* from Stoney Creek, Ontario, Canada . 06/02/2008. Read more [here](#) .

Online Offerings

SPDN RSS Feed

SPDN RSS is a static feed which makes it possible for people to **keep up with the SPDN website in an automated manner** . On the upper right side of the SPDN [home page](#) you can click the XML button to subscribe to this feed through google reader, yahoo or just bookmark the link.

The advantage is that you do not have to load the sepdn.org website to check for updates on topics listed in this feed. You can just click on the bookmarked link and click on the topic of your choice to get the current updates.

e-Authentication and Permits Information

The APHIS e-Authentication and Permits Office will have a booth at the APS meeting in Minneapolis. They will offer on-site e-Authentication in a convenient, one-stop-shopping experience. If you haven't been authenticated yet, now's the time! Authentication is required for renewing or applying for APHIS permits, including the 526 for diagnostic labs. Want to know more about a permit?

E-mail:

clharmon@ufl.edu

We're on the Web!

<http://sepdn.org/>

Click [here](#) if you would like to receive the newsletter via email, or to submit articles for inclusion in the next edition.

Published by the

Southern Plant
Diagnostic Network
(SPDN)

© Copyright University
of Florida

All Rights Reserved

Editor: Carrie L.
Harmon

for diagnostic labs. want to know more about e-permits ?

Check out the APHIS fact sheet (http://www.sepdn.org/DesktopModules/ViewDocument.aspx?Document_ID=2084) and the SPDN presentation (http://www.sepdn.org/DesktopModules/ViewDocument.aspx?Document_ID=2085).

Meetings

APS Centennial Meeting

[Register today online](#) to take part in the APS event of the century, July 26 - 30 in Minneapolis, Minnesota.

Caribbean Food Crops Society 44th Annual Meeting

July 13-17, 2008 in Miami Beach.

<http://cfcs.eea.uprm.edu/>

Education/ Training Opportunities

Soybean Rust Identification Short Course

This Short Course has been designed with the agricultural specialist or consultant in mind; the intended audience includes soybean professionals from across the country.

This course will be registered for Pest Management CEUs . For more details click [here](#) . Register [here](#) .

Mite Taxonomic Training Workshop

The mite taxonomic training workshop provides specialized training for entomologists. It is being held in Gainesville, Florida, from August 18 to 20, 2008. [Read more and register here](#).
