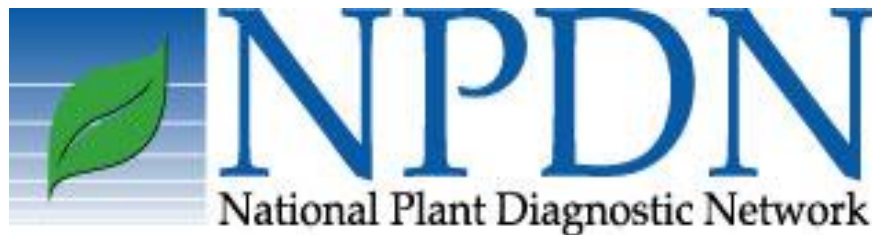


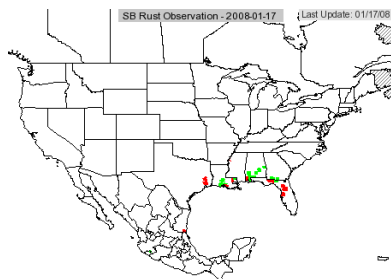
First Detector Network News

The newsletter for the NPDN
First Detector Community

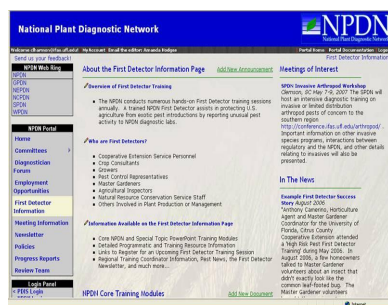
January 2008



Volume 5, Number 1



www.sbrusa.net



The First Detector Information
Page at <http://www.npdn.org>

Contact us:

Phone:
(352) 392-3631 ext 254

Fax:
(352) 392-6532

E-mail:
elharmon@ufl.edu

We're on the Web!
<http://sepdn.org/>

Click [here](#) if you would like
to receive the newsletter
via email, or to submit

From the NAPPO Phytosanitary alert system (www.pestalert.org) and UF/IFAS Pest Alert

- First report of *Duponchelia fovealis* - Finding in Ontario Greenhouse Production Facilities Read more [here](#).
- First report of *Ceratitis capitata* (Mediterranean fruit fly)--Quarantined Area Expansion in Los Angeles County, California - United States Read more [here](#).
- First report of *Phytophthora kernoviae* on wild Vaccinium Read more [here](#).
- USDA further expands citrus greening quarantine in Florida Read more [here](#).
- Blueberry gall midge parasitoids discovered . Read more [here](#).
- Court upholds Florida's regulation for *Septoria citri* on California citrus products. Read more [here](#)
- Red palm mite discovered in Florida. Read more [here](#)
- Detection and identification of the red palm mite, *Raoiella indica* . Read more [here](#)
- Mexican fruit fly quarantined area in San Diego County, California - See the *Featured Creatures* publication on this species. Read more [here](#)
- Bois noir phytoplasma infected plants found in Ontario, Canada. Read more [here](#)

Online Offerings

Introducing *Focus on Soybean*:
PMN's Newest Online Resource and Webcast Site

ST. PAUL, Minn. (January 8, 2008)--The Plant Management Network (PMN) announces the launch of its next-generation resource for those involved in soybean production and management. *Focus on Soybean* is an online-only web portal for growers, crop consultants, and researchers seeking information on producing healthy, high-yielding soybean crops.

For more information read [here](#).

articles for inclusion in the next edition.

Published by the
Southern Plant Diagnostic
Network (SPDN)
© Copyright University of
Florida
All Rights Reserved

Editor: Carrie L.
Harmon

4TH Soybean Cyst Nematode Conference

NOW OPEN! Registration and Abstract Submission
The 4th National Soybean Cyst Nematode Conference will take place March 6-7 in Tampa, Florida. Everyone with an interest in SCN is welcome!

Registration

Online registration for the conference is live and can be reached through the [American Phytopathological Society](#), or through the [Society of Nematologists](#). Registration made by February 5 is \$75, or \$125 after this date. Registration also includes two breakfasts, one lunch, coffee breaks, the poster session reception, and the Proceedings.

Abstracts

Abstracts of contributed posters will be published in the Proceedings. The online abstract submission form can be accessed through either the [APS](#) or [SON](#) websites. Abstracts should not exceed 500 words, including the title and author(s) names.

Deadlines

Registration and hotel reservations: February 5, 2008
Abstract submission: February 15, 2008

Questions?

Contact Corie Dacus cdacus@scisoc.org, Terry Niblack tniblack@uiuc.edu, or Greg Tylka gtylka@iastate.edu.

Employment Opportunities

Position Name: State Plant Pathologist (Scientist II)

Institute: Virginia Department of Agriculture and Consumer Sciences

Position Number: 00714

Place: Richmond City, Virginia

To be considered for this position, you must complete a state application through the on-line employment system at <https://jobs.agencies.virginia.gov/> no later than **5 p.m. on January 11 2008**. Resumes may accompany but **will not be accepted in lieu** of a Commonwealth of Virginia application.

For more information or assistance you may contact the

Human Resource Office, Virginia Department of
Agriculture and Consumer Services, 102 Governor Street,
Room 248, Richmond, VA 23219; Telephone: (804) 371-
8066; Hearing Impaired 1-800-828-1120; e-mail address
hr.vdacs@vdacs.virginia.gov