

## National Updates



Symptoms of plum pox virus on plum. (Photo Ralph Scorza, USDA, ARS-Appalachian Fruit Research Station, Keaneyville, W.Va)

### PPV Confirmed in Michigan

Plum pox virus was confirmed by the USDA's National Germplasm and Biotechnology Laboratory in Beltsville, MD on August 11, 2006.

The positive plum tree sample was collected at the Southwest Michigan Research and Experiment Center (SMWREC), a

Michigan State University facility, located near the Benton Harbor-St. Joseph area.

The PPV strain identified in Michigan is strain D. This less virulent strain of the virus is also present in Canada, Pennsylvania and New York.

Extensive surveys for PPV have been conducted in Michigan since 2000 by the Michigan Department of Agriculture in conjunction with APHIS. Currently, all 14,000 host trees at the SWMREC are being surveyed for disease. Upon completion, the survey will expand to

include host trees within a two mile radius of the original positive tree.

For more information, please visit on the web:

[USDA Laboratory Confirms Plum Pox Virus in Michigan, USDA-APHIS Press Release](#)

[Plum Pox Virus Confirmed in One Michigan Orchard: Public Meeting to be Held With Area Growers, Michigan Dept of Agriculture](#)

### *Issue Highlights:*

- ◆ PPV Confirmed in MI
- ◆ Emerald Ash Borer Detected in MD
- ◆ U.S. Soybean Rust Update
- ◆ Review of NPDN Activities at the 2006 APS Meeting
- ◆ 2007 NPDN National Meeting Announcement
- ◆ NPDN Diagnostic Subcommittee Update
- ◆ NPDN Web Committee Update
- ◆ IT Updates from the PDIS Development Team
- ◆ NEPDN and WPDN Regional News on Pests, Pathogens, Trainings and More

# National Updates

## Second Detection of Emerald Ash Borer in Maryland

Emerald ash borer (EAB) was recently detected in Maryland as part of an ongoing surveillance for the pest. EAB was detected in the Clinton/Brandywine area of southern Prince George's County. Survey efforts for EAB began in 2003 when the pest was first

detected in Maryland after a Michigan nurseryman shipped infested trees into a Prince George's County nursery. Efforts were made to eradicate the pest by collecting and destroying all trees sent to Maryland from the Michigan nurseryman as well as destroying all ash

trees within a half mile radius of the infested shipment. This is the first detection of EAB since the initial introduction in 2003. Survey efforts will be continued over the next two months to determine the extent of the infestation and provide information to determine a course of action. The Maryland Department of Agriculture has issued a quarantine order that prohibits the movement of ash trees or any hardwood firewood into or out of the infested county.

For more information, please visit on the web:

[Emerald Ash Borer Surveillance Detects the Presence of the Insect, Maryland Department of Agriculture Press Release](#)

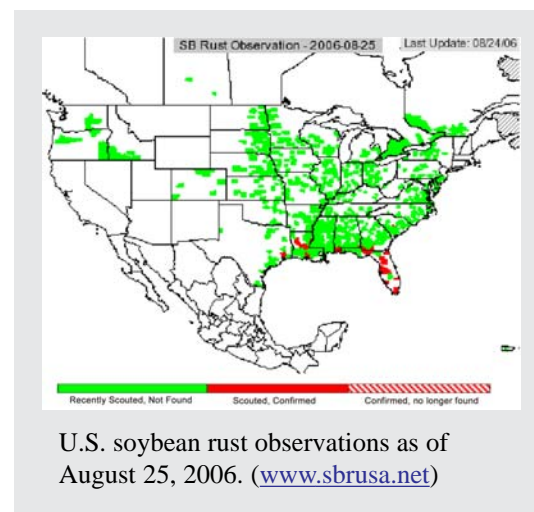


Adult Emerald Ash Borer, (Photo David Cappaert, [www.forestryimages.org](http://www.forestryimages.org))

## Update on Soybean Rust in U.S.

Soybean rust has been limited to the southeastern U.S. during the 2006 growing season. Intensive scouting efforts throughout the major soybean production areas resulted in the detection of soybean rust in 36 counties in seven states (AL, FL, GA, LA, MS, SC and TX). The majority of these soybean rust detections have been on kudzu. Soybean rust has been found infecting this year's soybeans in 1 county in AL, 3 counties in FL, 3 counties in GA, 6 counties in LA, 1 county in MS, 1 county in SC and 2 counties in TX. Only two of these detections of soybean rust on soybean were made in commercial fields, one in MS and one in TX. The remaining detections of soybean rust on soybean were made in sentinel plots.

For more information about soybean rust in the U.S., please visit the [USDA's Pest and Information Platform for Extension web site](#) and the [USDA's Soybean Rust Information Site](#).



U.S. soybean rust observations as of August 25, 2006. ([www.sbrusa.net](http://www.sbrusa.net))

## NPDN Activities at the 2006 APS Annual Meeting

The NPDN offered several opportunities for meeting participants to learn more about the network at the most recent [American Phytopathological Society Annual Meeting held on July 29-August 2 in Quebec City, Canada](#).

On Sunday July 30<sup>th</sup>, the directors and other members of the NPDN held an “NPDN Update and Planning Meeting.” Topics of discussion

during this meeting included NPDN subcommittee accomplishments, the NPDN National meeting in 2007 as well as the vision of the network in the future. The NPDN also had a booth at the APS trade show promoting the network and answering questions about training opportunities and PDIS. Thank you to all of those who volunteered their time manning the booth this year! Finally, the NPDN presented two posters at this year’s meeting. Links to the poster abstracts are below.

Abstracts for NPDN Poster Presentations at 2006 APS Meeting:

[The Role of Entomology in the National Plant Diagnostic Network \(NPDN\)](#)

[The National Plant Diagnostic Network \(NPDN\) Training and Education Program for First Detectors](#)

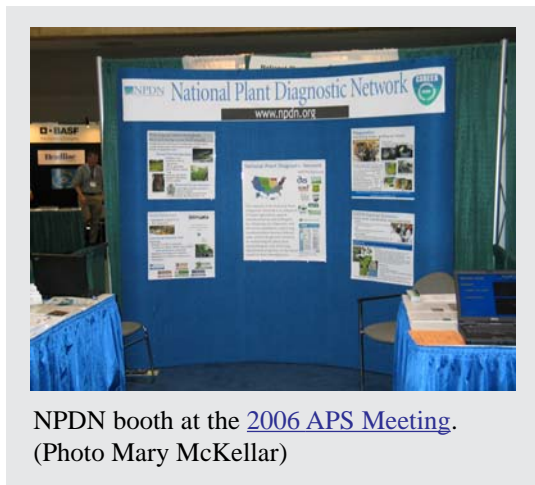
## NPDN National Meeting

Annual Meeting  
Planning Team

Karen L. Snover-Clift

Department of Plant Pathology

Cornell University



NPDN booth at the [2006 APS Meeting](#).  
(Photo Mary McKellar)

### SAVE THE DATE!

The NPDN National Meeting is scheduled for January 28-31, 2007 to be held at the Wyndham Orlando Resort in Orlando, Florida.

A call for poster submissions will

begin in the early fall so start thinking about what you would like other members and collaborators to learn about how the NPDN has impacted your program. We are asking that each State member submit a poster so we can all learn from each other.

**Registration will begin October 1, 2006.** Please plan to register early as we believe this will be a popular event!



[Wyndham Resort](#), Orlando, FL

# National Updates

# Diagnostic Updates

## Diagnostics Subcommittee Update

Karen L. Snover-Clift  
Committee Chairperson  
Department of Plant Pathology  
Cornell University

At the recent American Phytopathological Society Meeting in Quebec, the NPDN Diagnostics Subcommittee presented an update of its activities over the past year. To view this update, conference call minutes, membership information, technical documents and more, please visit the [NPDN web site diagnostic subcommittee page](#) (login required).

The next Diagnostics Subcommittee Conference Call will be held September 14, 2006.

### **Reminder: Permit Required for Interstate Movement of Samples**

The following was brought to the attention of Carrie Harmon of the SPDN by Jim White of USDA-APHIS-PPQ Permits Office.

A permit is needed for ALL interstate movement of samples, even across adjacent state lines. All labs receiving samples from out-of-state must apply for a 526 permit to receive unknown samples. Those labs receiving samples only from states immediately adjacent to them are not required to obtain a Biosafety hood, but still must have the permit.

For more information about this permit, please visit on the web: [USDA-APHIS-PPQ Permit 526](#)

# IT Updates

## NPDN Web Committee Update

Karen Scott  
Committee Chairperson  
Department of Plant Pathology  
Cornell University

The NPDN Web Committee held a conference call on June 8, 2006. NPDN Web Committee members consist of: Karen Scott, Chairperson (NEPDN), Lee Duynslager (NCPDN), Carrie Harmon (SPDN), Judy O'Mara (GPDN), Karen Snover-Clift (NEPDN), Carla Thomas (WPDN), Mary McKellar (NEPDN) and Eileen Luke (CERIS).

Please refer to the [NPDN website web committee page](#) (login required) for conference call minutes, subcommittee member contact information and more.

Agenda items addressed during this meeting consisted of: 1) purpose, vision & goals of the NPDN web portal and related sites and 2) addition of diagnostic labs to include all disciplines by state on NPDN home page.

### **1. Purpose, Vision & Goals of the NPDN Web Portal and Related Sites**

The committee was charged to present a document to the Operations Committee with the goals and intentions of the NPDN and regional web sites along with a site map of the current pages including access levels.

*Continued on page 5....*



Continued from page 4...

It was agreed that the regional centers would continue to maintain regional sites with regional information. The national site ([www.npdn.org](http://www.npdn.org)) would point people to the proper regional site and provide information to network members that affects the entire network or is of general interest and not region specific.

Karen Scott will provide a site map of the NPDN to use as a template for each regional site showing the current content and access levels. The goal of this project is to make a formal document to be used when posting information on all sites. This is intended to keep what is public information and what will be password protected as well as what type information is distributed on all NPDN related sites consistent. Each regional center will then put together a map of their site to present to the Operations committee as a tool to determine content and access consistency. The template should be completed and sent to regional reps by mid September and returned back to Karen Scott ([kas8@cornell.edu](mailto:kas8@cornell.edu)) by October 16, 2006. A complete proposal will be presented to the Operations Committee for approval.

## 2. Addition of Diagnostic Lab Contact Information on NPDN Home Page

The committee agreed to have diagnostic lab links on their regional pages and the NPDN home page would link to them.

It will be the regional centers responsibility to keep the diagnostic lab links up to date and to expand the contact and discipline information from a non-secure section of their web site.

## Recent Web Committee Accomplishments

Several policy decisions were made during this call.

First, a policy has been written addressing access approval process and content sensitivity of information posted. This is to establish what information will be password protected and who will be given access to it.

Additionally, a second policy addressing the “presentation log” module on the national site has been written. This policy is to provide guidance of who should enter presentation information into the log for reports showing who, where, when, and how the NPDN information is being presented and used. Both policies are in a “draft” form waiting for approval from the Operations Committee.

## From the PDIS Development Team

### Coming Up...

Jayasri Krishnasamy  
PDIS Development Team  
Kansas State University

- Under the Diagnosis tab, in the Enter/Edit Diagnosis feature, we have added more than 4 text boxes to enter Diagnosis/IDs.

Continued on page 6....

# IT Updates



# IT Updates

*Continued from page 5.....*

- Users can request 4 additional textboxes at a time by clicking the 'Add More Diagnosis' button and they can request a maximum of 16 text boxes to the add Diagnosis/ID.

- A new feature 'Time Period Report' will be implemented soon in PDIS. By using this new feature, the diagnostician can now print a report of lab data for their lab for a particular time interval. *Stay tuned for the release of this new feature.*

## How to Update User Information

Sharmila Dabade  
PDIS Development Team  
Kansas State University



1. After logging in, click on the 'My Account' link under the 'Main Menu' on the left hand side.
2. Then from user details, the user can change their password, addresses and phone numbers.
3. DO NOT forget to click on the respective 'Update' button to save the changed information in the database.
4. Also the user can see the previous and current login sessions.

For more information, please click on the 'Help' link under the Main Menu on [www.pdis.org](http://www.pdis.org)

## Did ya know?

Judy Dizon  
PDIS Development Team  
Kansas State University



Diagnosticians have the option of notifying their submitters by email once a sample is submitted to their lab.

Please refer to the User Manual found at the login page of <http://www.pdis.org> and see "Editing Labs" section under "Administration Module" for more information.

# National Database

## National Database Subcommittee Update

Karen L. Snover-Clift  
Committee Chairperson  
Department of Plant Pathology  
Cornell University

At the recent American Phytopathological Society Meeting in Quebec, the NPDN National Database Subcommittee presented an update of its activities over the past year. Please visit the [National Database subcommittee page on the NPDN web site](#) (login required) to view this update, conference call minutes, membership information, technical documents and more.

*Continued on page 7....*

Continued from page 6....

The NPDN National Database Subcommittee met on August 9, 2006 to continue our work on reviewing the massive EPA Pest and Host lists and creating guidelines for uploading documents that will clarify how sample diagnoses should be transmitted to the National Repository at Purdue University. During this meeting a number of issues were addressed.

- The projected date for all abiotic entries coded as Abiotic Pathology changed to Abiotic Disorder.
- The type of “How to” examples to be entered in the guidelines.
- How plant identifications should be entered into the National Repository.
- How to submit information if an organism is present vs. it is causing the problem.
- The upcoming Phase 2, Kansas City Meeting.
- Reviewing the Host listing beginning with Genera listed alphabetically under A and B.

**The next meeting will be held on September 13, 2006.**



## Northeast Region



*Phytophthora ramorum* sporulating on edge of bay leaf disk, 7 days after inoculation. (Photomicrographs by Dr. Jennifer L. Parke, Oregon State University, <http://nature.berkeley.edu/comtf/>)

# Regional Updates

## *Phytophthora ramorum* Confirmed on Lilac in Maine Nursery

A lilac shipped to Maine from an Oregon nursery was confirmed positive for *Phytophthora ramorum* this summer.

The lilac sample was collected as part of a trace forward survey. This is the first detection of *P. ramorum* in a Maine garden center or nursery since the state began its survey efforts in 2004. The Maine State Department of Agriculture and the Maine Department of Conservation are making a plea to homeowners to locate 13 other lilacs that were sold from the same garden center as the infected plant prior to the confirmation.

For more information on this confirmation, please visit on the web:

[State Warns of Infected Lilac Shrubs, Kennebec Journal](#)

[State Officials Seek Homeowner's Help to Locate Possibly Diseased Lilac Plants, Maine State Department of Agriculture Press Release](#)

# Regional Updates



Adult Sirex woodwasp, *Sirex noctilio*. (Photo Paula Klasmer, Instituto Nacional de Tecnologia Agropecuaria, [www.forestryimages.org](http://www.forestryimages.org))

## New Sirex Woodwasp Detections in New York and First Detection in Pennsylvania

Through a cooperative detection and delimiting survey conducted by APHIS-PPQ and the New York State (NYS) Department of Agriculture, *Sirex noctilio* or the Sirex woodwasp, has been detected in an additional 13 counties in NYS in 2006. First detected in NYS in 2004 in Oswego County, 2005 survey results identified four additional NY counties as infested with this pest. The cooperative 2006 survey was a continuation of those begun in 2004 and 2005.

*S. noctilio* was recently confirmed in Pennsylvania as a result of cooperative survey efforts in north central and northeastern Pennsylvania conducted since late June 2006 by APHIS-PPQ, the Pennsylvania Department of Agriculture, the Pennsylvania Department of Conservation and Natural Resources, the Pennsylvania Division of Forest Pest Management and the United States Forest Service. In late July, Cornell University positively identified a female *S. noctilio* from Tioga County, Pennsylvania. The sample was confirmed by the Systematic Entomology Laboratory in Beltsville, Maryland. This is the first record of *S. noctilio* in Pennsylvania.

## PDIS Training

Karen L. Snover-Clift  
Department of Plant Pathology  
Cornell University

The NEPDN regional center at the Cornell University Plant Disease Diagnostic Clinic will be hosting a PDIS training session on October 5, 2006. If you or anyone in your laboratory would like to receive this training, please contact Karen Snover-Clift ([kls13@cornell.edu](mailto:kls13@cornell.edu)) or Karen Scott ([kas8@cornell.edu](mailto:kas8@cornell.edu)) to make arrangements.

## Maryland Department of Agriculture Updates: Provisional Certification Approval for *P. ramorum* Testing and More

John Bowers  
Maryland Department of Agriculture

We have some recent updates at the Maryland Department of Agriculture Plant Pathology Lab that may interest those in Mid-Atlantic and Northeast regions. John Bowers has been granted Provisional Approval to perform APHIS PPQ validated diagnostic tests for *P. ramorum*. This includes both conventional (multiplex and nested) and real-time PCR. We have used real-time PCR this season for the National Nursery Survey and the National Forest Service Survey for *P. ramorum* for samples from Maryland, Delaware, and New Jersey.

The lab also has received two new APHIS PPQ permits. One allows us to receive diseased plant samples for diagnostic identification from other states.

*Continued on page 9...*



*Continued from page 8....*

We are interested in the prevalence of Hosta Virus X in different cultivars, and although this is not an open call for samples, we may be interested in testing a range of cultivars that may be diseased.

The other permit allows us to receive domestic cultures of *Phytophthora* species for use as positive controls and comparisons with unknown isolates. This will allow us to increase our knowledge of the different species of *Phytophthora* present in the state compared to known cultures, especially isolates from *Fagus sylvatica* (European Beech).

You may contact John Bowers ([BowersJH@mda.state.md.us](mailto:BowersJH@mda.state.md.us)) or Rich Anacker ([AnackerRH@mda.state.md.us](mailto:AnackerRH@mda.state.md.us)) for more information.



*Phytophthora* infection on beech, *Fagus sylvatica*. (Photo George Hudler, Cornell University)

## **NEW! NEPDN Informational Sheet Available**

An informational sheet on the NEPDN and its role in the network will be available to NEPDN member states in September. This informational sheet can

be useful for trainings and other outreach events. **Also available:** We also have a NEPDN informational table top display that is available to our member states for outreach events. Please contact Mary McKellar ([mem40@cornell.edu](mailto:mem40@cornell.edu)) for more information on using the display and/or to request copies of the NEPDN informational sheet.



## *Western Region*

### **Congratulations and Thanks to WPDN Members Bernarr Kumashiro and John Chitamber**

Bernarr Kumashiro, Insect Taxonomist with the Hawaii Department of Agriculture (HDOA), was presented an award on August 16, 2006 for superior performance. He was also named the Department's Employee of the Year. Bernarr has been an outstanding contributor to the WPDN and NPDN. He and his colleagues at HDOA took the lead in coordinating local arrangements and field trips during the WPDN Regional Workgroup annual meeting held on the Big Island in January. He and Barry Brennan of the University of Hawaii have been the key organizers of a major NPDN exercise for glassy-winged sharpshooter and *Xylella fastidiosa* in Guam and Hawaii. He serves as the PI of the WPDN subcontract to HDOA. Congratulations to Bernarr!

*Continued on page 10....*

# Regional Updates

# Regional News

*Continued from page 9...*

John Chitamber,  
Nematologist with the  
California Department of  
Food and Agriculture,

recently completed an updated pest code list for nematodes for use by the NPDN Diagnostics Committee. John put in a great deal of effort on this project and pretty much single-handedly completed the work. He did an exceptional job. Many thanks to John for his contributions.

Additional delimitation surveys are planned for Washington State. Research on detection and management methods has been initiated by Canadian authorities.

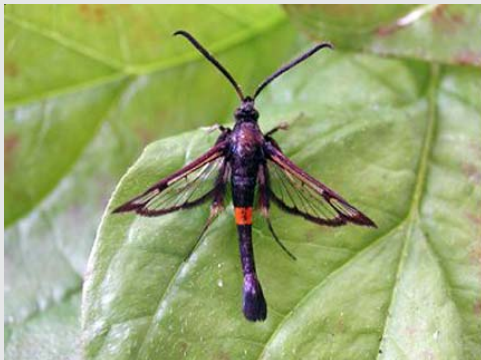
For more information, please visit on the web:

[An Introduced Species of Clearwing Moth Discovered in a British Columbia Apple Orchard, NAPPO Phytosanitary Alert System](#)

[Red-Belted Clearwing Moth Information Page, WSU IPM, Whatcom County](#)

[Apple Clearwing Moth Pest Alert, British of Columbia, Ministry of Agriculture and Lands](#)

[Image of Red-Belted Clearwing Moth Adult, UKMoths.org](#)



Eurasian Bark-Boring Clearwing Moth (aka Red-belted Clearwing, *Synanthedon myopaeformis* Borkhausen) (Photo Steve Nash, [www.ukmoths.org.uk](http://www.ukmoths.org.uk))

## First Detection of Eurasian Bark-Boring Clearwing Moth in U.S.

The Eurasian bark-boring clearwing moth, *Synanthedon myopaeformis* Borkhausen, has been found for the first time in the United States.

First detected in 2005 in a commercial apple orchard in British Columbia, it has been recently collected in the U.S. in 2006 in pheromone-traps at several sites in Northwestern Washington State.

Known as the apple clearwing moth in England, it is a significant pest of apple, pear, and other Rosaceous trees and shrubs. Larval feeding in the bark of host trees (in Europe) causes tree decline, reduces fruiting, and predisposes infested trees to attack by pathogens.

## *National Events*

**September 25-29, 2006:** [15th Ornamental Workshop on Diseases and Insects](#), Crossnore/Kanuga, Hendersonville, NC

**October 16-17, 2006:** [IT-Diagnosticians Meeting](#), Kansas City, MO.  
More information to follow!

**November 29 – December 1 2006:** [National Soybean Rust Symposium](#), St. Louis, Missouri

**December 3-6, 2006 and December 7-8, 2006:** [4th International Bemisia Workshop and International Whitefly Genomics Workshop](#), Hawk's Cay Resort, Duck Key, Florida, **Abstracts due August 1st!**

**December 10-13, 2006:** [Entomological Society of America Annual Meeting](#), Indianapolis, IN

**January 28-31, 2007,** NPDN National Meeting, Orlando, FL.

## *Regional Events*

November 7-9, 2006, [APS Northeastern Division Meeting](#), Burlington, VT

# Upcoming Events

