

Real-Time PCR Workshop To Be Held January 22-24, University of Kentucky

A workshop on real-time PCR for applied plant pathologists will be held at the **University of Kentucky on January 22-24, 2008.**

We have only one space available for an additional participant.

Participants will execute and interpret four real-time PCR experiments, extract DNA, and run a gel.

Topics include theory of real-time PCR, experimental controls, PCR inhibition, use of PCR kits, licensing, minimizing sample contamination, and troubleshooting. Primer design is not included in the workshop.

For more information, contact Paul Vincelli (pvincell@uky.edu).

Diagnostic Subcommittee Update

Karen L. Snover-Clift
Subcommittee Chair
Cornell University
Department of Plant Pathology

The NPDN diagnostic subcommittee held a conference call on October 19, 2007. Please refer to the diagnostics subcommittee web page of the [NPDN web site](#) for complete minutes of this meeting (login and password required).

Topics of discussion included:

- Review of recent operations committee strategic planning meeting.
- Beltsville-NPDN diagnostician training planning.
- Soybean rust suspect sample

handling requirements change.

- Mycotoxin workshop being offered by Gail Ruhl and Nina Zidack.
- 4th IT-Diagnostician's Meeting plans.

Diagnostic Tip of the Month: An Easy Way to Get Pure Cultures from Fungal Leaf Spots

Clarissa Balbalian
Diagnostician/Lab Manager
Mississippi State University

One easy way to get pure cultures from fungal leaf spots is to position the leaf piece over a culture plate using either double-sided tape or petroleum jelly.

Place a piece of double-sided tape or a dab of petroleum jelly on the inside of a Petri dish lid. Mount a piece of sporulating leaf tissue on the tape so that the non-sporulating side is down against the tape (Figure 1). Place the lid back on the Petri dish, parafilm the lid (Figure 2) and allow time for the spores to drop onto the agar surface and germinate (usually around 24 hrs).

Remove single spores or small colonies from the agar surface and transfer to the desired culture medium for growth and identification (Figure 3).

Continued on page 4...

Diagnostic Updates



Figure 1 and 2. Double-sided tape is placed on the cover a Petri dish (top). The leaf of interest is attached to the Petri dish cover so that the sporulating side faces the agar (bottom).

National Database

Continued from page 3...

You may want to examine one with a compound microscope to make sure you are transferring the targeted organism.

Single conidial isolates should grow into pure cultures (Figure 4), preferably of the fungus you are looking for!

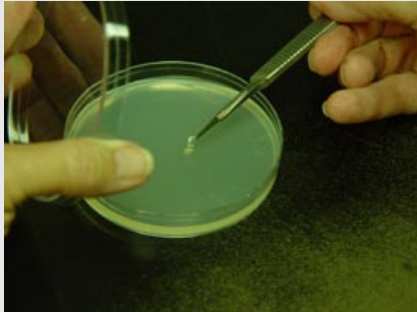


Figure 3 and 4. Spores or single colonies can be transferred to a new agar plate (top). Pure culture colonies from single conidial isolates (bottom).

NPDN National Database

Mike Hill
CERIS Programmer/
Analyst
Purdue University

4th Annual IT/ Diagnostician's Meeting

If you have been invited to attend the 4th Annual IT/Diagnostician's Meeting, time is running out to make reservations for the meeting.

This year's meeting will be held at the Adam's Mark hotel in St. Louis on November 28-29, 2007:

[Adam's Mark Hotel](#)
315 Chestnut Street
St. Louis, MO 63102
1-800-444-2326

Members of the PDIS change management team will meet for a half day on the afternoon of Tuesday November 27th. The IT/Diagnostician's meeting will begin on Wednesday November 28th

at 8:00am and conclude on Thursday November 29th at noon. There will also be a PDIS users meeting in the afternoon on November 29th along with an Epidemiology meeting during the same time.

Reservations should be made at the [Adam's Mark](#) hotel by calling 1-800-444-2326 and mentioning the "NPDN" meeting to get the block room rate of \$119/night.

The following transportation is available to the hotel from the airport:

Trans Express Shuttle Service
314.427.3311

VIP Car & Limo Services (Lina)
636.946.9996

President Casino Shuttle
314.622.1111

Laclede Cab Co.
314.652.3456

Buses: Greyline
314.241.1224

Metro Link – 8th & Pine (4 blocks away)
\$3 each way

Taxi
\$25-30 each way from Airport

Bus Parking: S & H Parking
314.621.1602

Please contact Mike Hill at 765-494-9854 if you have any questions about the upcoming meeting. We look forward to seeing you in St. Louis.

