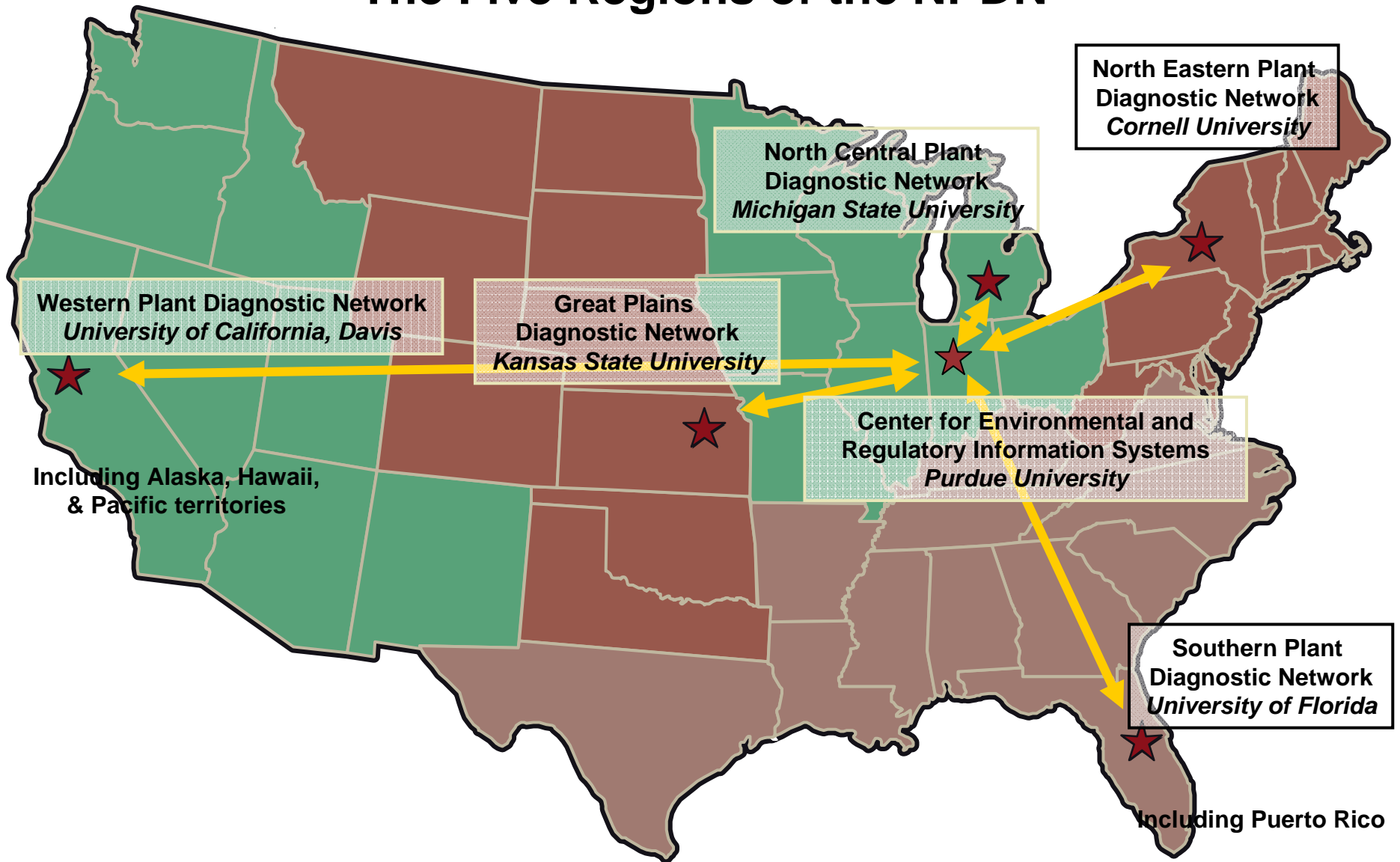




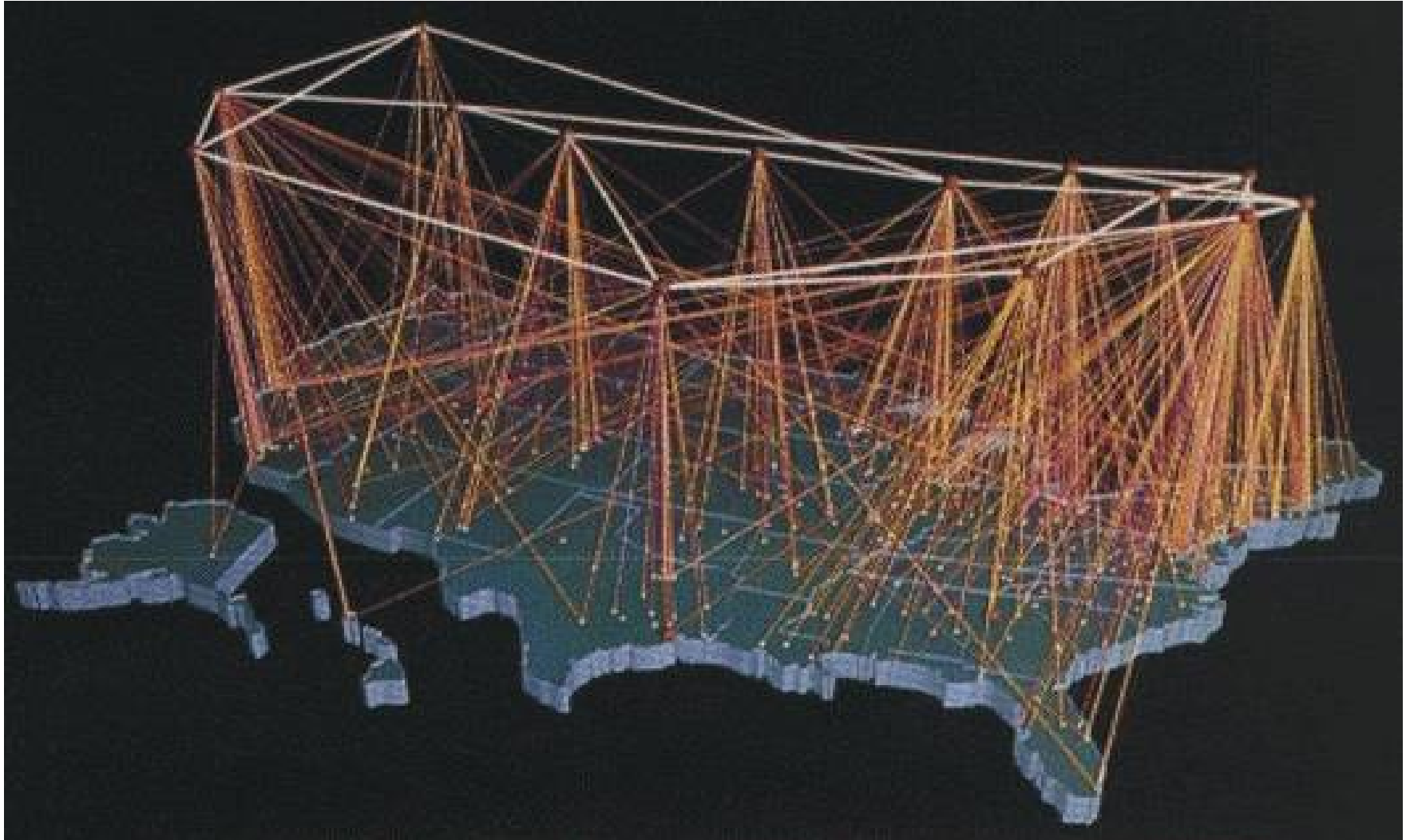
***NPDN: Current Status and Future  
(Where we might be on an  
international stage)***

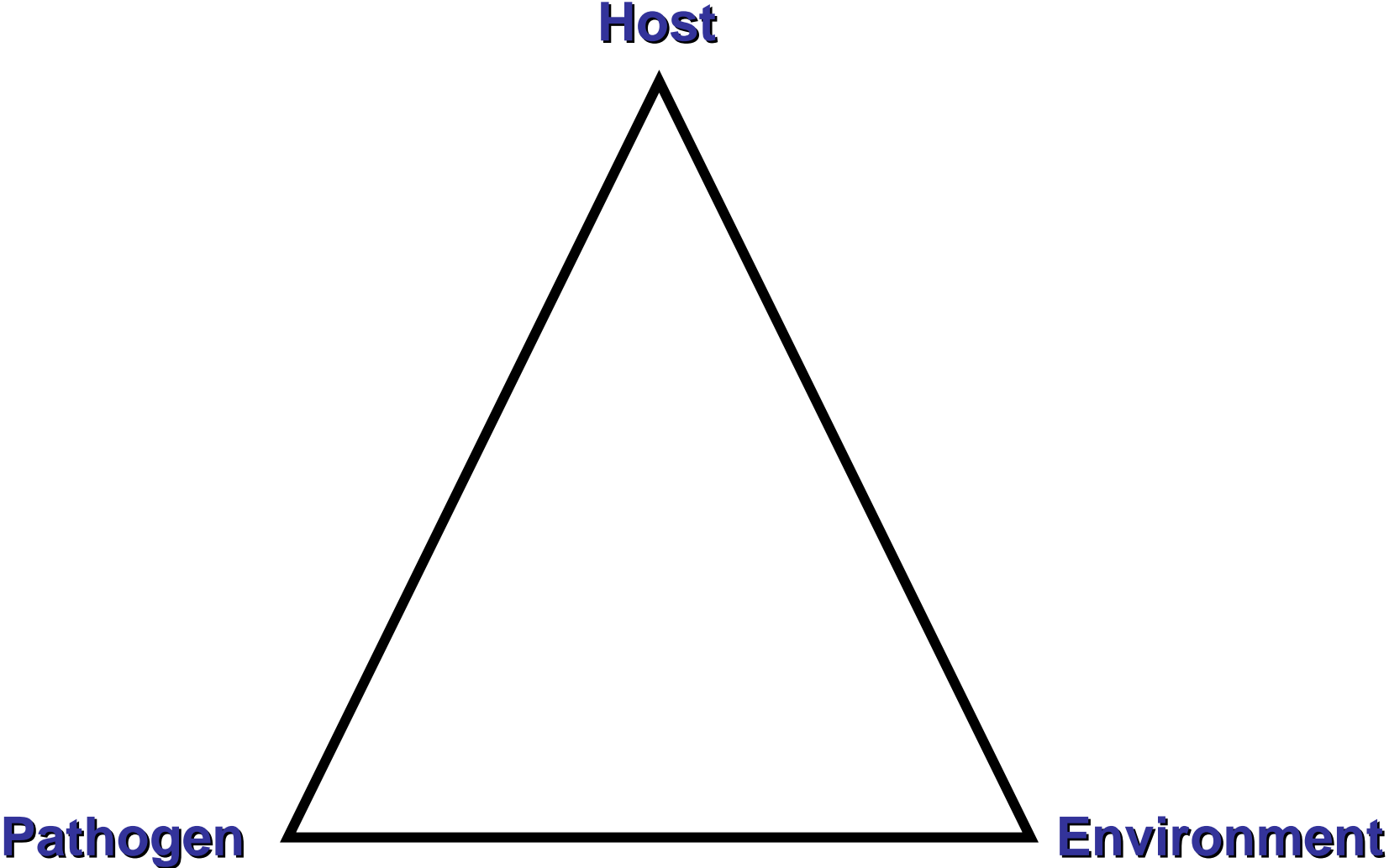
***Richard Bostock  
Director, WPDN  
Department of Plant Pathology  
University of California, Davis***

# The Five Regions of the NPDN



# **Plant and Animal Health Diagnostic Networks in the U.S.**





**Rapid Detection and Diagnosis**



**NPDN Mission**

**Secure  
Communication**

**Education  
and  
Outreach**

**No regulatory role or authority**

# Interagency Partnerships

## Land Grant Universities

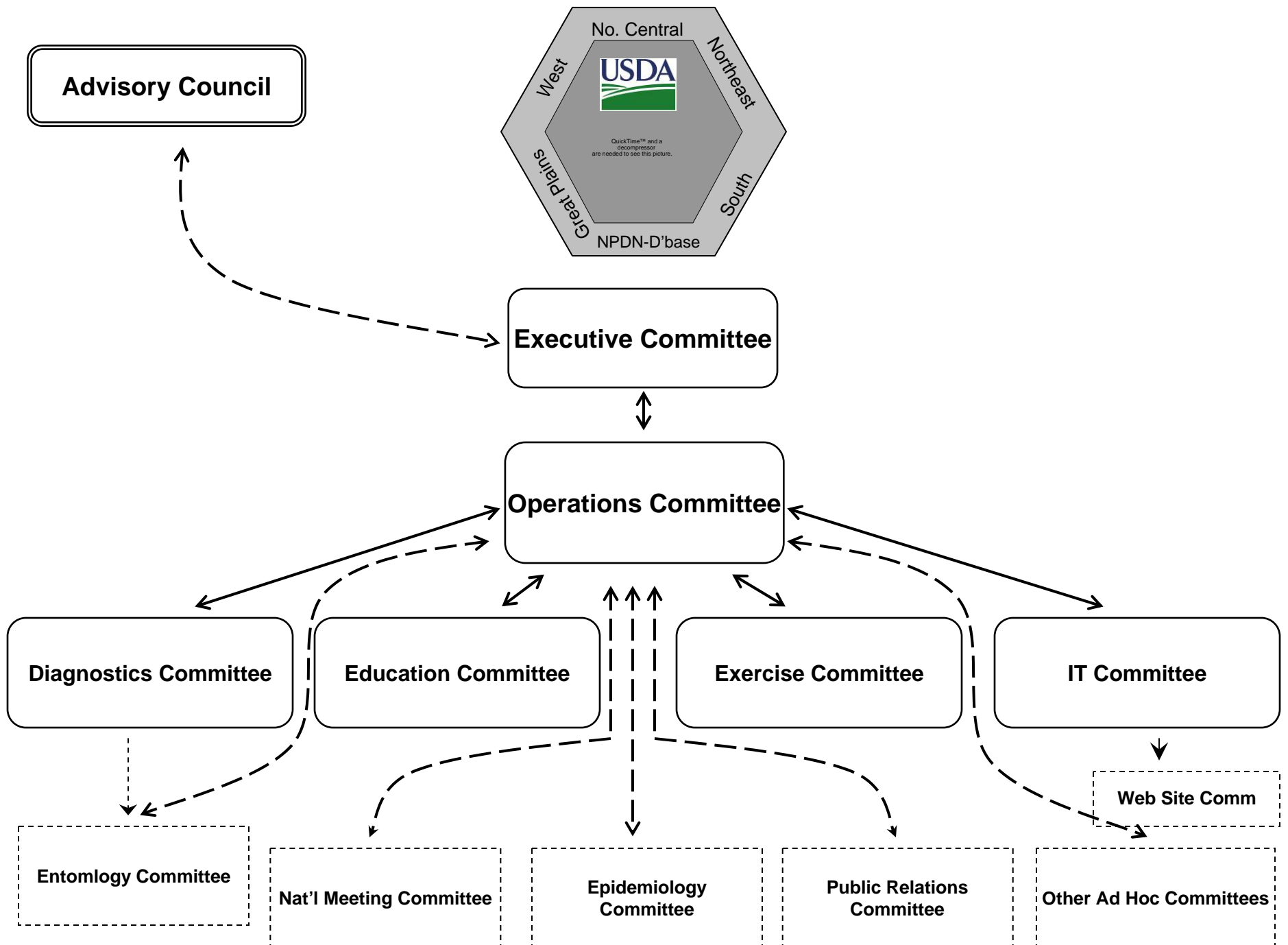


## Federal Agencies



## State Departments of Agriculture





# **Can the NPDN provide a model for building broader networks and what are the lessons learned along the way?**

**Clearly define the mission and scope of the program**

**Establish organizational structure and governance**

**Broad representation in operations and program committees**

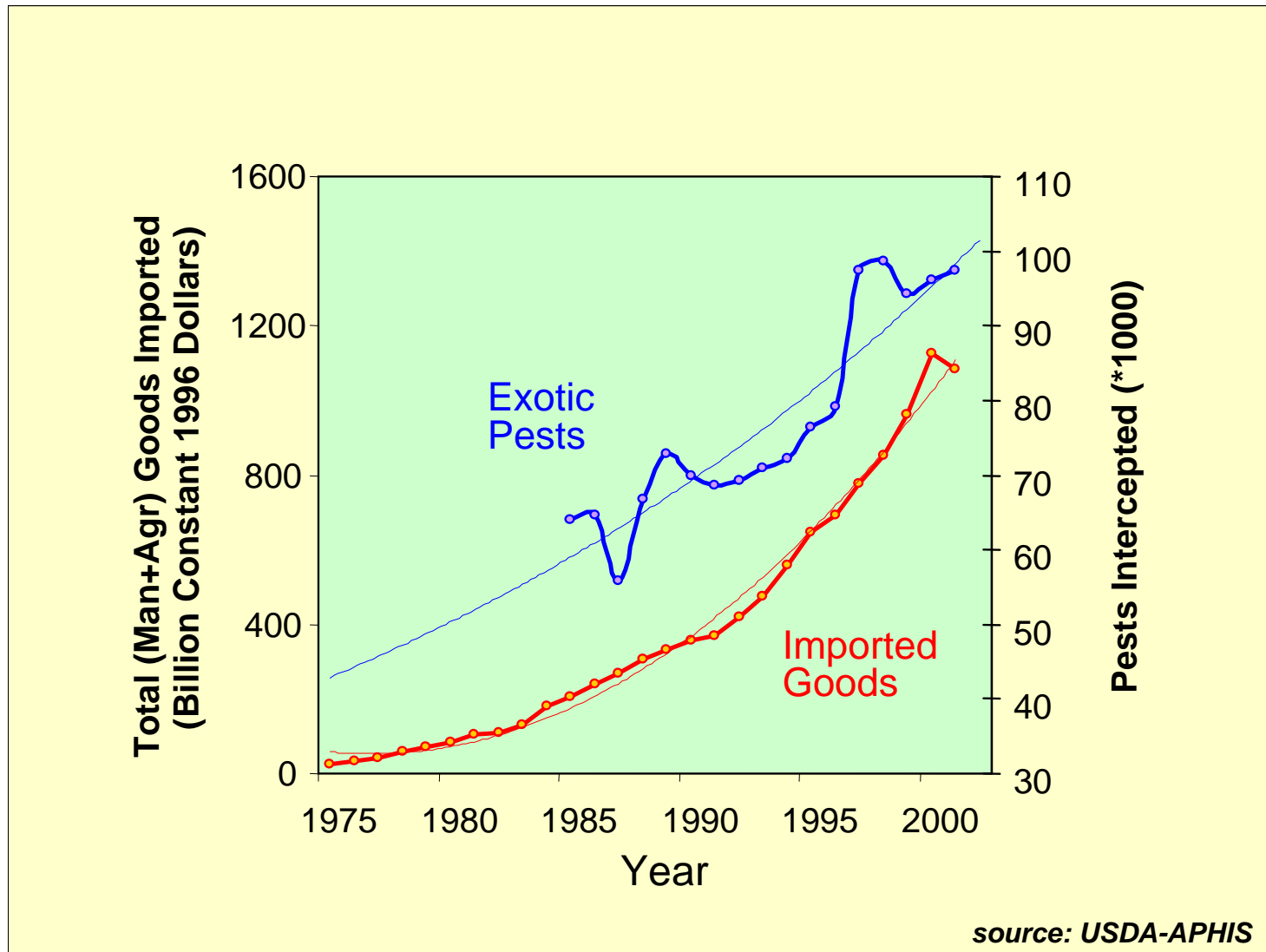
**Understand communication chain - exercises**

**Acknowledge “turf” and areas of responsibility; data sharing issues**

**Flexibility that allows tailoring to local and regional needs**

**Spirit of collaboration and frequent dialogue**

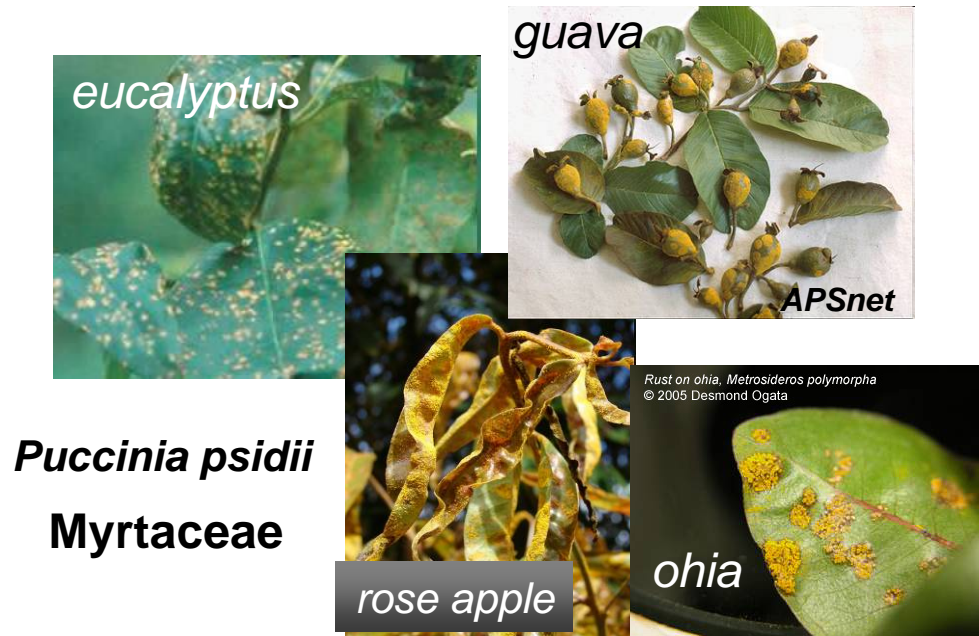
# Introductions of invasive pests and pathogens are only increasing with globalization



Human resources and capacity to inspect only a tiny fraction of ag imports at our borders

# Opportunities/needs for international networking on invasive pests and pathogens

1. Pathogen/pest information gaps – biology and host range. A growing trend of unexpected host shifts, new associations and extended ranges.



## **Cryphonectria canker of eucalyptus**

### ***Chrysosporthe cubensis***

very aggressive and concern of  
new associations

2. Worldwide surveillance, monitoring and communication networking – a unified system for real-time capture and recording of new outbreaks.
  - IT intensive
  - Graphical mapping (e.g., NPDN epidemiology tools; IPM-PIPE)

## **Opportunities/needs for international networking on invasive pests and pathogens**

3. Commitment to fund by legislators – finding collaboration and synergy between agricultural community and human infectious disease community – overlap in issues, challenges and solutions

4. Information sharing –

- ICLN – LRN, NAHLN, NPDN, FERN, eLRN
- APS, ESA, WSSA and international counterparts
- CABI, EPPO, etc.

**What can we learn from each other?**

**Think outside the triangle!**